

# Entry Door Options

See Therma-Tru Boise 80 page brochure for size options.

## Flush-Glazed SDL

Fiber-Classic® / Smooth-Star®.



**FC2000-2W2H** ▲  
Stained Walnut  
Low-E / Clear Glass  
(Also available in  
Smooth-Star S2000)



**FC2000-2W3H** ▲  
Stained Natural Oak  
Low-E / Clear Glass  
(Also available in  
Smooth-Star S2000)



**FC2000-2W4H** ▲  
Stained English Walnut  
Low-E / Clear Glass  
(Also available in  
Smooth-Star S2000)



**FC2000-3W5H** ▲  
Stained Cherry  
Low-E / Clear Glass  
(Also available in  
Smooth-Star S2000)



**FC2000-3Lt.  
Craftsman** ▲  
Stained Light Oak  
Low-E / Clear Glass  
(Also available in  
Smooth-Star S2000)



**FC2000-1W5H** ▲  
Stained Walnut  
Low-E / Clear Glass  
(Also available in  
Smooth-Star S2000)

Flush-Glazed SDL full-glass doors available in 6'8" height and 2'0", 2'6", 2'8", and 3'0" widths.  
Smooth-Star S2000 doors also available with Low-E in 6'6" and 6'8" heights in 2'10" width.

## Flush-Glazed SDL

Fiber-Classic® / Smooth-Star®.



**FC2000-9 Lt.** ▲  
Stained English Walnut  
Low-E / Clear Glass  
(Also available in  
Smooth-Star S2000)



**FC2000-1PCR9** ▲  
Stained Cherry  
Low-E / Clear Glass  
(Also available in  
Smooth-Star S2000)

## 3/4-Glass SDL

Classic-Craft®.



**CCM200-2W2H** 3'0" x 6'8"  
Stained English Walnut  
Low-E / Clear Glass



**CCM200-2W3H** 3'0" x 6'8"  
**CCM3300SL-1W3H** ▲  
10", 12", 14" x 6'8"  
Stained Mahogany  
Low-E / Clear Glass

## Flush-Glazed

Fiber-Classic® / Smooth-Star®.



**FC2100-3W3H** ▲  
2'8", 3'0" x 6'8"  
Stained Cedar  
SDL & Low-E / Clear Glass



**FC2100-2W2H** ▲  
2'8", 3'0" x 6'8"  
Stained Natural Oak  
SDL & Low-E / Clear Glass



**S2100** ▲  
2'6", 2'8", 3'0" x 6'8"  
Painted Software  
Low-E / Clear Glass



**S2200-2W2H** ▲  
2'6", 2'8", 3'0" x 6'8"  
**S2000SL** ▲ 10", 12" x 6'8"  
Painted Crimson Red  
Low-E / Clear Glass



**S2200-2W3H** ▲  
2'6", 2'8", 3'0" x 6'8"  
**S90SL-1W3H** ▲ 12" x 6'8"  
Painted Clary Sage  
Low-E / Clear Glass

SDL Simulated Divided Lites ▲ Flush-Glazed Glass Items denoted in RED add one week to existing lead time if not in stock.

THERMA-TRU®  
DOORS

## Multi-Point Locking System

### Standard Door Options



**Tongue**  
(For single door systems.)



**Shootbolt**  
(For double door systems.)

### Exterior Handlesets



Heirloom



Millennium

### Finish Options



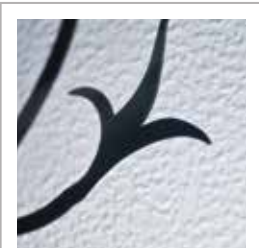
Bright  
Brass



Brushed  
Nickel



Oil-Rubbed  
Bronze



THERMA-TRU®  
DOORS



Boise Cascade

Note: Product images show exterior side of door. Glass designs may differ from depiction due to handcrafting and size of glass.  
©2017 Therma-Tru Corp. All rights reserved. THERMA-TRU and the Therma-Tru Logo are trademarks of Therma-Tru Corp. Registered trademarks are registered in the U.S. and may be registered internationally. Therma-Tru Corp. is an operating company of Fortune Brands Home & Security, Inc. MET16.10215 01/17



Entry Door Options

See Therma-Tru Boise 80 page brochure for size options.

Full-Glass  
Fiber-Classic® / Smooth-Star®



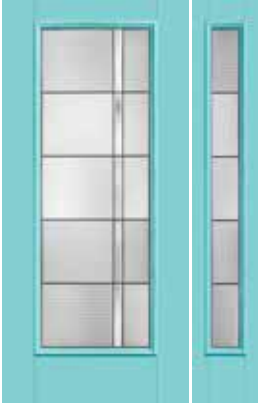
**FC108-1D, 1C** 2'8", 3'0" x 6'8"  
Stained Cherry  
Blackstone.  
(2'6" available - call for lead time)



**FC905-1D, 1C** 2'8", 3'0" x 6'8"  
**FC905SL-1D, 1C** 10", 12" x 6'8"  
Stained Walnut  
Saratoga..  
(2'6" available - call for lead time)



**S155-1D, 1C** 2'8", 3'0" x 6'8"  
Painted Positive Red  
Wellesley..  
(2'6" available - call for lead time)



**S1652-1D** 2'4", 2'6", 2'8", 3'0" x 6'8"  
**S1652SL-1D** 10", 12", 14" x 6'8"  
Painted Belize  
Axis..

3/4-Glass  
Classic-Craft®



**CCV05027XN** 3'0" x 6'8"  
Painted Clary Sage  
Augustine.



**CCM1475** 3'0" x 6'8"  
**CCM3400XHSL** 12", 14" x 6'8"  
Stained Cherry  
Borrassa.



**CCV1519** 3'0" x 6'8"  
**CCV100XHSL** 12", 14" x 6'8"  
Painted Tricorn Black  
Borrassa.

3/4-Glass  
Fiber-Classic®

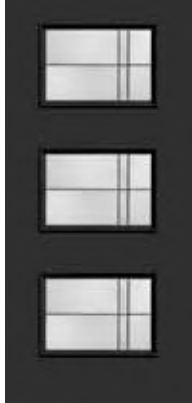


**FCM543** 3'0" x 6'8"  
**FCM572SL** 10", 12" x 6'8"  
Stained Natural Oak  
Riserva..



**FC529** 2'8", 3'0" x 6'8"  
Stained Walnut  
Riserva..

Pulse.  
Ari / Línea / Echo



**S2AX**  
Painted Tricorn Black  
Axis..

Pulse doors available in 6'8" height and 2'6", 2'8", 2'10" and 3'0" widths.



**S2XE**  
Painted Belize  
Satin Etch



**S1RSG-1D, 1C**  
Painted Naval  
Saratoga..



**S1LXN**  
Painted Clary Sage  
Granite



**S5RAX / S5LAX**  
Painted Software  
Axis..

3/4-Glass  
Classic-Craft®



**CCM210B-1D, 1C** 3'0" x 6'8"  
**CCM3310BSL-1D, 1C** 10", 12", 14" x 6'8"  
Stained English Walnut  
Bella..



**CCM203-1D, 1C** 3'0" x 6'8"  
**CCM3303SL-1D, 1C** 10", 12", 14" x 6'8"  
**LFRT Transom**  
Stained Mahogany  
Longford..

3/4-Glass  
Smooth-Star®



**S20042-1D** 2'8", 3'0" x 6'8"  
**S1442SL-1D** 12", 14" x 6'8"  
Painted Clary Sage  
Kensington..



**S156-1D** 3'0" x 6'8"  
**S160SL-1D** 10", 12", 14" x 6'8"  
Painted Naval  
Kensington..

Oval  
Classic-Craft® / Smooth-Star®



**CCM703-1D, 1C** 3'0" x 6'8"  
**CCM3303SL-1D, 1C** 10", 12", 14" x 6'8"  
Stained Walnut  
Longford..



**S6082-1D, 1C** 3'0" x 6'8"  
**S5870SL-1D, 1C** 10", 12", 14" x 6'8"  
Painted Burgundy  
Wellesley..

Center Arch  
Fiber-Classic®



**FCM904-1D, 1C** 3'0" x 6'8"  
**FCM812SL-1D, 1C** 10", 12" x 6'8"  
Stained English Walnut  
Maple Park.

Camber Top  
Smooth-Star®



**S721-1D, 1C** 2'8", 3'0" x 6'8"  
**S5870SL-1D** 10", 12", 14" x 6'8"  
Painted Software  
Wellesley..

Internal Blinds  
Smooth-Star®



**S130**  
Painted Extra White  
(Available in 2'4", 2'6", 2'8", 2'10" and 3'0" widths only. 2'4" x 6'8" and 6'6" are in VBR clear only. 2'10" also available in 6'6" height.)

Flush-Glazed SDL  
Smooth-Star®



**S2000-5130G** 12", 14" x 6'8"  
Painted Positive Red  
Low-E / Clear Glass

SDL doors available in 6'8" height and 2'0", 2'6", 2'8", and 3'0" widths. Available with Low-E in 6'6" and 6'8" height in 2'10" widths.



**S2000-5082G** 12", 14" x 6'8"  
Painted Lounge Green  
Low-E / Clear Glass



**S2000-5030G3R** 12", 14" x 6'8"  
Painted Crimson Red  
Low-E / Clear Glass



**S2000-4096W** 12", 14" x 6'8"  
Painted Belize  
Low-E / Clear Glass



**S2000** 12", 14" x 6'8"  
**S2000SL** 10", 12" x 6'8"  
Painted Extra White  
Low-E / Clear Glass

3/4-Glass  
Fiber-Classic® / Smooth-Star®



**FC779-1D, 1C** 2'8", 3'0" x 6'8"  
**FC104SL-1D, 1C** 10", 12" x 6'8"  
**19730T Transom**  
Stained Walnut  
Wellesley..



**S983-1D, 1C** 2'8", 3'0" x 6'8"  
**S155SL-1D, 1C** 12", 14" x 6'8"  
Painted Software  
Wellesley..



**FCM912-1D, 1C** 3'0" x 6'8"  
**FCM912SL-1D, 1C** 12" x 6'8"  
Stained Cherry  
Concorde..

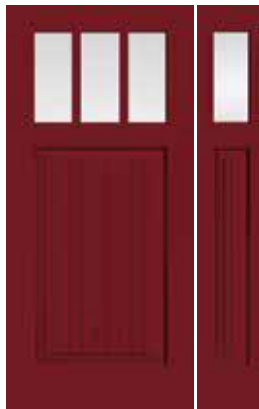


**S912-1D, 1C** 3'0" x 6'8"  
**S757SL-1D, 1C** 12", 14" x 6'8"  
Painted Turkish Coffee  
Concorde..

Craftsman  
Classic-Craft®



**CCA260** 12" x 6'8"  
**CCA220SL** 12" x 6'8"  
Stained Natural Oak  
SDL & Low-E / Clear Glass



**CCV930** 12" x 6'8"  
**CCV9010SL** 12" x 6'8"  
Painted Crimson Red  
SDL & Low-E / Clear Glass

Craftsman  
Fiber-Classic® / Smooth-Star®



**FCM609-1D** 2'8", 3'0" x 6'8"  
**FCM812SL-1D, 1C** 10", 12" x 6'8"  
Stained Mahogany  
Maple Park.



**S4813** 10", 12" x 6'8" (2nd qtr)  
**S606** 2'8", 3'0" x 6'8"  
**S2000SL** 10", 12" x 6'8"  
Painted Clary Sage  
SDL & Low-E / Clear Glass

Internal Blinds & Screen Vented  
Smooth-Star®



**S132** 2'8", 3'0" x 6'8"  
Painted Turkish Coffee



**S243** 2'8", 3'0" x 6'8"  
Painted Software

Solid Panel  
Classic-Craft® / Fiber-Classic® / Smooth-Star®



**CCR200** 3'0" x 6'8"  
Stained English Walnut



**CCV220** 3'0" x 6'8"  
**S2000SL** 10", 12" x 6'8"  
Painted Positive Red



**S200** 2'8", 3'0" x 6'8"  
Painted Clary Sage



**FCM205** 3'0" x 6'8"  
Stained Mahogany

SDL Simulated Divided Lites    Flush-Glazed Glass    Items denoted in RED add one week to existing lead time if not in stock.